

# News

Edition 05/2008

## K'2007 at Düsseldorf – a real positive retrospect

*After more than 6 months the exhibition K'2007 is out of our mind and already history.*

The positive contacts during the exhibition became a number of orders and have been partly already delivered or will be ready for delivery very soon.

Very substantial was the request for recycling machinery for the reprocessing of high quality plastic materials.

The demand for the standard PME-single screw extruders with die-face cutting, strand–and

underwater pelletizing was equal against the interest in the combination line.

High sophisticated systems for top quality and highest productivity are in the focus.

PLASTMACHINES presents a wide spectrum based on decades of co-operation with multiple customers worldwide.

The success is the modular and variety of systems for a large number of sizes. This enables the coverage of the extended range of applications.

Due to the attachment of the continuous



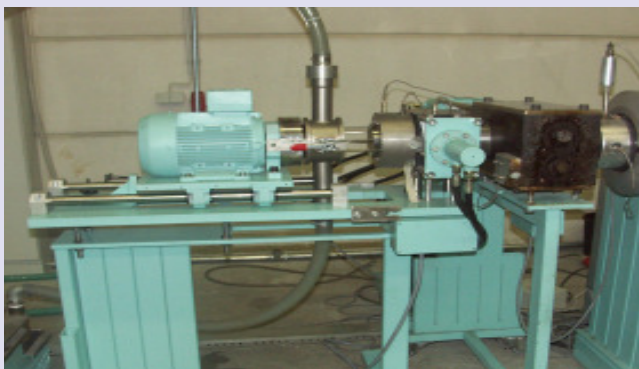
Pelletizing in the focus

operating densifier with transfer screw become the extrusion system unbeatable in flexibility. Waste materials as packaging film, fibres, foam a.s.o. will be continuously compacted and forced through the variable transfer screw

into the extruder with enormous saving of energy and man power.

These extruders are designed for highest outputs and guarantee a reliability of performance through the robust components.

### The new UWP together with the new hydraulic screen changer in continuous operating execution – an unbeatable system



Underwater pelletizing is a future orientated alternative to reprocess plastic waste materials to high quality resin.

The new hydraulic screen changer with its two cylindrical pistons and the consequently cylindrical filter cartridges are unbeatable in extended filter area enabling a high filtrated quality and processing time at a very attractive price. The automatic back-flush system is integrated in every system.

Beside PET bottles, film and preforms, PA fibres, PC, PMMA of the automotive section, also PP and PS from office and household products and PE and Polystyrene foam are focussing a majority of recycling materials.

## Start-up with obstacles



### Combination line for the pelletizing of PE-film

*The way was hard. It took only a few years until the combination line ZTE 80/35 had been placed in production.*

A waste mountain of PE-film has piled up and had to be reprocessed to high quality pellets. In spite of the long delay the combination line started without any troubles and the mountain melted down rapidly. After intense production the conditions got normal and the

machine could cope with waste stream of the production.

price. The delay of two years had to catch up.

Due to the large energy saving of the combination line the customer succeeded to reduce his production costs with result of obtaining a very favourable raw material

They are working on this subject.



Ordering, manufacturing and delivery was a relative short concern. But then started the drama. At the final inspection of the production hall it was discovered that the ground was heavily contaminated with hazardous chemicals.

Investigation, search for the responsibility and the complete decontamination and replacement of the underground took time and consequently costs. After two years the line could be placed into its position and be started.

### The new UWP together with the screen changer in continuous operating execution – an unbeatable system

Beside strand – and water-ring pelletizing systems a raising number of customers are deciding for underwater pelletizing. Well known in the sector of virgin material it is now finding its way also into the recycling application. The space requirement is reduced for the ancillary equipment. Breaking of strands and plastification of the die holes system is eliminated.

The use of the continuous screenchanger with cylindrical filter candles are enabling a much extended constance of pressure with the result of improved production conditions even with higher contamination.

The use of the backflush is extending the life time of the screens and enables a further automatisation and reduces the production costs additionally.

### Impressum:

**PLASTMACHINES**  
International GmbH

Untere Au 1  
D - 82275 Emmering  
Tel: +49 8141 9793 - Fax: +49 8141 9790  
<http://www.plastmachines.com>  
e-mail: [plastmachines@t-online.de](mailto:plastmachines@t-online.de)